

CANVAS

Introducing the 1200CX

Drive a competitive advantage by delivering consistent, high-quality wall finishes faster, safer and more cost-effectively than traditional manual methods.

The 1200CX is our most compact machine, with the highest reach in the world. Its ability to self-drive and all-wheel steer makes it easy to auto position and maneuver in tight spaces. In addition, your team can ditch the cords, as the 1200CX is battery powered and can run all day on a single charge.

A worker-controlled intelligent drywall machine that leverages robotics to consistently produce high quality finishes in less time.

The 1200CX Advantage

Boost Productivity to Accelerate Schedules

Reduce the number of touchpoints to finish a wall by 40%

Produce High Quality Output Consistently

Generates high quality L4/L5 finishes every time, regardless of machine operator's skill level

Improve Worker Safety

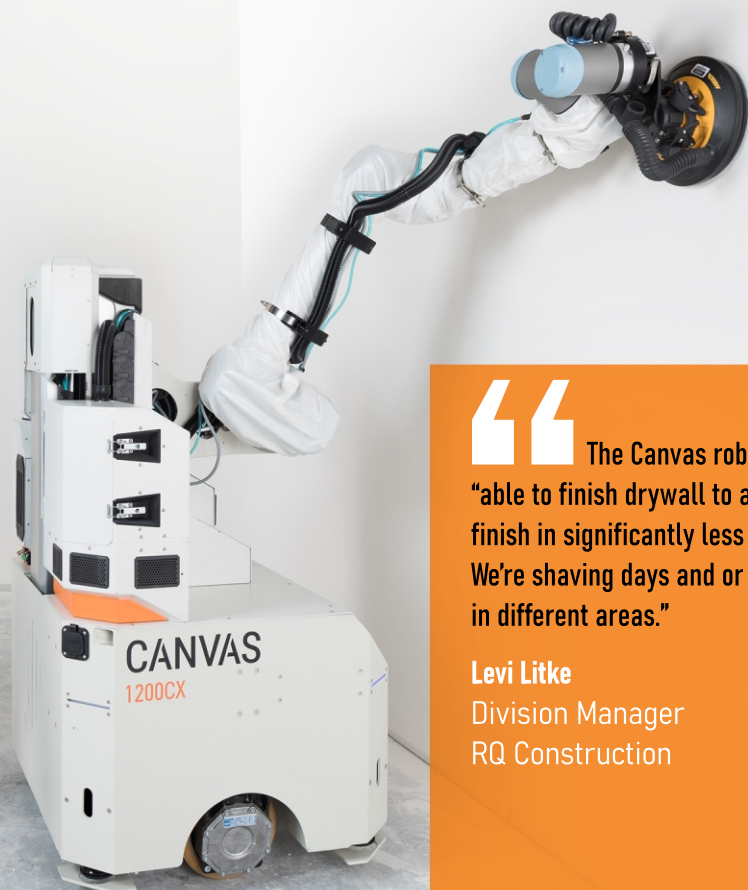
Remove 70% burden on worker's shoulders and backs, capture harmful dust and silica, and minimize high height work

“

The Canvas robots are “able to finish drywall to a Level 5 finish in significantly less time. We’re shaving days and or weeks in different areas.”

Levi Litke
Division Manager
RQ Construction

”



1200CX Key Features



Compact Design

Measures 30" by 35.4" and weighs only 1200 lbs, but has a 12' reach



Self-Drive with All-Wheel Steer

Auto position and maneuver in tight spaces, with openings as small as 30"



Battery Powered

Run all day on a single charge



Simple to Use

Get up and running quickly with an intuitive machine that is easy to learn



4 Tools in 1

Use the same machine for: L4 spray, L4 sand, L5 spray, L5 sand



Robust Analytics

Real-time site and robot data provide insights that enable productivity gains, predictability, and schedule savings



We've seen great momentum firsthand as Suffolk's trade partners embrace the efficiency and innovation that Canvas brings to the field. The recent excitement across the country is a clear signal that the future of construction is being built today leveraging new-age robotic tools.

Parker Mundt

Vice President of Platform
Suffolk Technologies



About Canvas

Canvas is a construction technology company revolutionizing productivity by building an entirely new class of robotic machinery. Canvas robots transform tasks traditionally performed with hand tools by automating the physical installation of materials in interior spaces. By harnessing the power of advanced robotics, data and AI, Canvas accelerates interior construction while enhancing worker safety and efficiency. Our flagship product is a worker-controlled robot that delivers consistent, high-quality wall finishes, completing drywalling faster and more cost-effectively than traditional manual methods. Canvas is redefining the future of interior construction.




 canvas.build



 [@canvasrobotics](https://twitter.com/canvasrobotics)



 [we-are-canvas](https://www.linkedin.com/company/we-are-canvas)

CONTACT

sales@canvas.build

